

EDITOR'S DESK

Welcome to the Summer issue of FOOTPRINTS! We have dedicated this issue to Dr. Phil Upchurch.

Everyone at UAFA is committed as ever to carry on the great work of Dr. Phil Upchurch. I chose to print a lovely email from our new board member Linda Sparks on page 5 (News & Information) because her words reflect how so many of us feel.

Dr. Phil left us with a fresh new story for this issue. It's the follow-up of his Migration theme entries, titled *Vision For A Future American Upchurch Historian To Explore About Migration*.

Also very important, we are blessed with a very fine leader, UAFA President Tom Upchurch, MD. He and the Board of Directors and office team and volunteers are committed to nurturing Phil's vision and building upon it.

THANK YOU FOR YOUR SUPPORT.

Please accept our heartfelt invitation to join UAFA and let us extend our sincere appreciation to our members who have renewed their membership.

Cindy Hale – Editor

INSIDE THIS ISSUE

<i>BOARD OF DIRECTORS</i>	2
<i>CONTACT US</i>	2
<i>Upchurch and Allied Families 2020 President's Report by David Thomas Upchurch, M.D.</i>	2
<i>NEWS & INFORMATION</i>	5
<i>Vision For A Future American Upchurch Historian To Explore About Migration by Robert Phillip Upchurch, PhD</i>	6
<i>In the 1918 Flu Pandemic, Not Wearing a Mask Was Illegal in Some Parts of America. What Changed?</i>	7
<i>Biofile Benefits by Carla Michaels</i>	8
<i>DNA Connections—Accelerate your research with Ancestry Thrulines™ by Brenda Carbon</i>	9
<i>Our Upchurch Family by Cindy Hale</i>	10
<i>Coincidental Reunion by Thomas P. Hale</i>	11
<i>Upchurch, John Jordan by John M. Martin</i>	13
<i>Quick View: Where is the Upchurch Family From?</i>	15
<i>Old Homesteads: The George Eugene Upchurch, (Sr.) House</i>	16
<i>Military Column: Upchurches in the Civil War</i>	17
<i>Bits and Pieces—Interesting Segments from the Past—The Upchurch Family in England Understandings and Misunderstandings by Robert Phillip Upchurch, PhD</i>	25
<i>Heirloom Recipe Corner: A Recipe for "Warshing" Clothes</i>	26

This Issue is Dedicated to Our Founder Robert Phillip Upchurch PhD



BOARD OF DIRECTORS

Dr. David Thomas Upchurch, GA
President

Woody H Yates, MBA, CPM - NC
Vice President

Debra Upchurch Heck, MO
Treasurer/Secretary

Carla Michaels, Cary NC
Director

Nancy-Blair Upchurch Ariano, GA
Director

Staley C. Smith, Apex, NC
Director

Linda Upchurch Sparks, TN
Director

Michael R. Upchurch, Cary NC
Director

Dr. Stephen Terry, NC
Director

Herbert Jackson "Jack" Upchurch, SC
Director

Dr. John Calhoun Upchurch, GA
Director

For a link to Board Member
Resumes [Click Here](#)

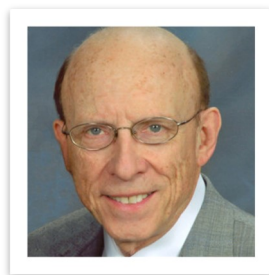
CONTACT US!

Jay Buck, Office Manager,
Webmaster
jay.buck@alliedfamilies.org

Cindy Hale, Newsletter
Coordinator, Editor
UpchurchRoots@gmail.com

[Search Upchurch and Allied
Families on the web!](#)
www.alliedfamilies.com/

[Join](#) us on *Facebook!*
Upchurch & Allied
Families



Upchurch and Allied Families 2020 President's Report

By Tom Upchurch, MD



We lost our founder Phil Upchurch to pancreatic carcinoma on May 27, 2020. Phil had spent over three years before his death trying to be sure that he had done everything possible to assure that UAFA would continue successfully without him. In the last year, UAFA accomplished all the amazing things that are reviewed below and we know that he will rest in peace knowing that his deep engagement in our American story will be carried forward for generations to appreciate.

Upchurch descendants to **over 100,000!**

Anna's home is Toddville, IA. Linda lives in Jackson, TN and Teresa lives in Strang, OK.

► Expanded the Big Beautiful **American Upchurch Index Tree** to over 77,000 members.

The Big Tree is a merge of information from all the UAFA Upchurch Clan Trees. The merge was accomplished by Tree Master Co-Ordinator Linda Upchurch Sparks. She plans on creating a new merge in January

"It is an incredible opportunity to work with an organization of such giving and talented people".

We have achieved the following major accomplishments since June 2019.

► Completed transfer of family tree information of over 80,000 individuals from Phil's paper-based system into the Ancestry.com cloud. This was a seven-year project that created nineteen clan-based Upchurch trees and about 20 UAFA Allied Family trees in the www.ancestry.com cloud.

► Completed transfer of Anna Marie Sheet's George Upchurch information into the UAFA George Upchurch Tree. Anna had been working independently on her tree for over 27 years and decided to contribute her information to the UAFA George Upchurch tree.

This added over 12,000 new individuals, over 9000 photos and almost 67,000 records. Anna entered most of this information into UAFA by hand, assisted by Linda Sparks and Teresa Churchill. Her contribution increased our database of

each year. This will bring in all the changes and updates that have been added during the preceding year to the different clan trees.

The January 2021 merge will reflect the data/work our tree masters have added to the clan trees this year and doing so will increase the Big Tree once again.

► Expanded several UAFA Allied Family Trees and have documented much more information relative to 13 families who were strongly associated with Upchurches in Wake County during or just after the American Colonial era. The ancestry.com allied family trees now have a combined number of 47,500 ancestors and also include 15,304 records and 666 photos

► Completed scanning of Phil's paper-based research notes (Phil called these his "biofiles"). The biofiles are stored in over forty 4-drawer filing cabinets that contain a vast paper-based archive of historic and

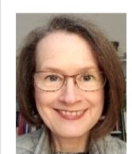
Continued on next page

Upchurch and Allied Families 2020 President's Report continued from page 2

genealogy information on over one-million people. The scans are available to anyone for no cost under the "Biofiles" area of our UAFA website, www.alliedfamilies.com (Use password: 2014allied#).

We use a password so we can identify people who are interested in this information. Scanning was completed by Jay Buck and his team in Chesterfield, MO.

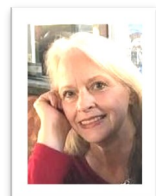
Handwritten records in the biofiles are being converted into digital texts that are easier to read and are, perhaps more importantly, word-searchable. This work requires reading old notes and manually typing the information into a digital file.



This work of love is being done by Carla Michaels (L) of Cary NC and her team.

► Prior to his death, Phil granted UAFA the scanned versions of his genealogy work. He gifted the paper-based records to North Carolina State University.

► We welcomed Cynthia "Cindy" Hale Rudich (L) of Peoria, AZ as the UAFA Newsletter Coordinator and editor. Cindy is producing two to four-page newsletters monthly except in Jan and July when she produces FOOTPRINTS, a much more comprehensive, multiple page version.



These publications are delivered by email to UAFA contacts and are also posted to the Upchurch and Allied Families page on Facebook.

► Adopted Wild Apricot web-based membership management software.

This cloud-based tool will make it possible for managers and members to access UAFA functions from any place in the world that is connected to the Internet. This has become crucial because our people are located all over the United States.



Ronald Upchurch (L) of Westin, CO has been invaluable in helping with the difficult process of transferring from paper-based and high-

"We welcome all who enjoy learning more about themselves and their families by exploring past generations and history to join us by volunteering time, money or both."



ly local to digital and cloud-based membership management.

► Added two more stories to our Upchurch and Allied Families YouTube channel. There are 37 videos of Phil telling family stories. These will be the last that feature Phil as our storyteller. With his passing these videos are even more dear to us. To access UAFA videos, go to www.youtube.com and enter "Upchurch and Allied Families" in the search box.

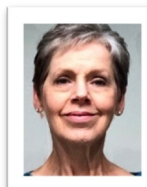
► Are planning to close the Chesterfield, MO UAFA Office by Sept 2020. Most of the work there involves scanning documents and general operations support. Scanning should be completed in the next few weeks and Jay Buck will handle general operations from his home office after that.

The office in Cary, NC continues to house our library of UAFA-specific books, maps,

and other paper records and provide a welcome place for volunteer groups that work with UAFA such as the Daughters of the American Revolution (DAR). The future of this office will depend on financial status and upcoming board decisions.

► UAFA welcomed Steven D. Terry, PhD, PE of Garner, NC as our new Tree Master Coordinator for the UAFA Allied Families Trees in Ancestry.com! He will help maintain the Allied Family trees in Ancestry.com, included safety backups, assist tree masters, work with Linda Sparks the Tree Master Coordinator for the UAFA Upchurch Family Trees and continue his work on Tree Master for the Council family. Steven has the distinction of being related to more families in Wake County, North Carolina than anyone we know.

► UAFA continues to be guided and supported by a strong Board of Directors To access Board Member Resumes [Click Here](#)



► The UAFA Board of Directors welcomed new member Linda Upchurch Sparks (L) of Jackson, TN in late June 2020.

UAFA Goals for FY 2020-21

✓ Encourage more members to join local and national genealogy groups and societies. We have a great story to tell and we need to learn from others.

Continue to encourage use by all of Phil's biofile and Upchurch Bulletins information.

Let more people know that this information is available on our Allied Families webpage

✓ Use information to support family tree entries in Ancestry.com

Continued on next page



Upchurch and Allied Families 2020 President's Report *continued from page 3*

✓ Use biofiles and bulletins to find family stories to add to stories and UAFA Newsletters.

✓ Improve searchability of the biofiles by continuing with transcriptions and indexing of files.

✓ Extend work on interlinking between all UAFA clan trees and Allied Family Trees. Full implementation of this project will create a huge virtual tree of descendants of families who lived in the Wake County, NC area in the mid to late 1700s.

Upchurch and Allied Family Ancestry.com trees currently document over 147,000 individuals and the number is growing rapidly.

✓ Continue to add more individuals, supporting information, pictures, and graphics to all Ancestry.com trees.

Find more people who have the time and interest to be tree masters.

✓ Encourage more people to read the Upchurch and Allied Families Facebook page and the UAFA monthly newsletters.

✓ Increase utilization of Wild Apricot member management software

✓ Encourage use by all members.

Use automatic features to reduce labor associated with billing and payments.

Increase use of Web Page features.

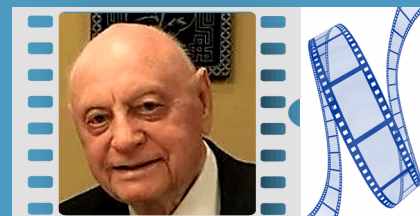
Our current achievements and those hoped for are largely the result of thousands of hours of volunteer work supported by monetary contributions from about 200 people working from locations all over the United States. Financial support is crucial because we must pay for support services necessary for our volunteers to do their

work. These include office space, licenses, insurance, computers, scanners, and legal and accounting services. We also pay our manager and a few other people who work for exceptionally low reimbursement, often just enough to cover expenses. In 2019 -20 our total cost of doing business was about \$35,000, an amazingly low figure considering the size, complexity and productivity of the organization.

Since we do not charge for any of our products, we are entirely dependent on contributions from those who find our work worthwhile and are willing to support it. UAFA membership is based on an annual contribution of \$50.00 but fortunately many give above that level, a few much more.

It is an incredible opportunity to work with an organization of such giving and talented people.

We welcome all who enjoy learning more about themselves and their families by exploring past generations and history to join us by volunteering time, money or



Over 35 videos featuring **Dr. Phil Upchurch** telling family stories along with UAFA President, Dr. Tom Upchurch, are available and free [https:// www.youtube.com](https://www.youtube.com)

After opening YouTube, enter "Upchurch and Allied Families" into the search box. This will open the UAFA channel and display the videos.



Finding a UAFA-Upchurch Family Clan Tree or UAFA Allied Family Tree in Ancestry.com:

Open www.ancestry.com

Single Click "Search" from the top menu bar

Select "Member Search"

Enter "Phil Upchurch"

To view an UAFA-Upchurch Families clan tree:

Select the first option which is Phil Upchurch, Chesterfield, MO

After the page opens, scan through available clan trees by clicking the > in the right middle of the page. When you find the clan you wish to view, click on the name and the tree will open.

To view an UAFA-Allied Family tree:

Select the last option which is Phil Upchurch beside the Allied Family icon

After the page opens, you can scan through available family trees by clicking the > in the right middle of the page. When you find the family you wish to view, click on the name and the tree will open.

UAFA NEWS & INFORMATION

ANNOUNCEMENT:

UAFA President, **Dr. Tom Upchurch** let me know that we now have two Family Tree Coordinators! One for UAFA Upchurch Family Trees on Ancestry, which is our **Linda Sparks**. Our newly added Tree Master Coordinator for the UAFA Allied Families Trees is **Dr. Stephen Terry**!



Wake Treasures is the bi-annual Journal of the Wake County Genealogical Society in North Carolina. Dr. Robert "Phil" Upchurch wrote an article called **The Puzzle of the Name of My Uncle and Its Relevance to Wake** which appeared in their recent newsletter **Wake Treasures – Volume 29, Number 1, Spring 2020**. Members of WCGS have access to download all issues of the journal on the [Wake Treasures](#) page of the Member's Area of the website. If you would like to become a member of WCGS, click [Joining WCGS](#) to find an application form or to join through Paypal.

The **Wake County Genealogical Society** of NC promotes research and education in genealogy and family history, and aids in publication and dissemination of local genealogical and historical materials.

Hi Cousins, I'm sure all of you have read the sad news of the death of UAFA founder Phil Upchurch. Some of you knew him well, much better than I, and others of you never had the pleasure of meeting him. I was fortunate to meet him in April last year and then to visit in his home in July. We formed an instant connection—in fact he dubbed me his "genealogical daughter". I'm afraid he thought he saw more potential in me than I actually possess, (um, no —Editor) but he did inspire me to use the skills I have to continue the work he began. There is no better way for those of us to whom he entrusted his passion for family history to honor his memory than to renew our commitment to document and improve his family trees. Will you join me in that commitment? As Phil would say, "for the cause", **Linda Upchurch Sparks**, Board Member/Tree Master Coordinator

Although our Tree Master Coordinator, Linda Sparks reported an overall disappointing quarter ending June 30, 2020, two ladies deserve a mention again for their hard work. Thank you **Teresa Churchill** and **Anna Sheets**! Files were synced (or downloaded fresh), compacted, backed up, and stored in Dropbox and external hard drive by Linda. As a group, what do you say the rest of us Tree Masters put in a big effort in this quarter (July-September), as we promised? Myself included!

I'd like to share a really nice letter from Carolyn Panko.

Hello, Cindy.

Thank you for a most informative newsletter this month. I have some lineage information from the line of Charles Upchurch, who was my 4th great G-grandfather. His grandson, Thomas Gay Upchurch (Jr.?), fathered a number of children, one of whom, Robert Gay Upchurch, moved to Vernon, Louisiana and fathered nine children, including Maggie Ora Upchurch, my grandmother.

I will continue looking to see how I can attach some of my information. I have not seen a Louisiana connection. BUT, I need to search again.

Again, thank you for the excellent compilation of such interesting information. Peace.

Have old pictures you might share? Join us on Facebook : [Upchurch & Allied Families](#)

Please send us your stories, memories, recipes or ? to UpchurchRoots@gmail.com

Carla Michaels sent along a screen shot of their July 1, 2020 UAFA Board Meeting which just proves that work continues in spite of COVID-19 restrictions!





VISION FOR A FUTURE AMERICAN UPCHURCH HISTORIAN TO EXPLORE ABOUT MIGRATION

By Dr. Robert Phillip Upchurch



American Migration and how it evolved with the Upchurches and Allied Families was one of Dr. Phil's favorite subjects.

This draft was written March 20, 2020 as a follow-up to his Footprints story, CHAPTER X. MIGRATIONS OF UPCHURCH AND ALLIED FAMILIES (printed in the last Footprints issue, January 2020).

—Editor

One of the components of our Upchurch American family concerns the migration of the family.

It no doubt became a topic of interest shortly after Michael Upchurch I arrived in Virginia about 1638.

The broad story was treated by me in the first issue of Footprints. On March 1, 2020 I was watching a book review on C-SPAN when the vision came to me. It was about the Seminole Indians and how they were moved from the Georgia/Florida area in the 1850's to Oklahoma. It immediately struck me that my great Uncle Nathaniel Smith Upchurch moved from North Carolina to the GA/FL area in the 1850's when he was in his 20's. I'll just bet he somehow was involved with the Seminoles in one way or another.

But the slice of the story having to do with great Uncle Nathaniel is

just a small part of the overall Indian-Upchurch interaction story. To get the full details in the records we will have to wait for a volunteer Upchurch historian to take up the project.

Mae Davenport Cox did this and several others have uncovered some facets. I have put some aspects in issues of the Upchurch Bulletin. Just putting all of these various pieces together in one place would be a great start. Bear in

Part II concerns Upchurches moving into areas where treaties were in place.

Both Parts are distinctive in nature. Bear in mind that in both situations Upchurch men took Indian females as wives if necessary. That is not just an Upchurch story, it is an American story.

Also, bear in mind that the saga to which we refer took place across the map starting on the east coast and continuing to the western part of states such as North Carolina, Alabama, Tennessee, Georgia, Mississippi, Illinois, and then into all the western states.

Even in my wife's family the possible Indian heritage of my mother-in-law was still being debated in recent years with some justification.



The Second Seminole War, also known as the Florida War, was a conflict from 1835 to 1842 in Florida.

mind that the story needs to be told in two parts.

Part I should concern Upchurch-Indian interactions made before formal treaties were put in place. These were all unofficial and our cousins were living in wild territory with some good and some bad outcomes.

The story of the American Upchurch Family will never be fully told until we are able to get the Indian aspect out on the table. There is room here for a good interested historian to volunteer.

Where are you?

BOOK CITATIONS:

1. Rackley Book
2. Debnam Book
3. Mae Cox Book
4. Upchurch Bulletins



In the 1918 Flu Pandemic, Not Wearing a Mask Was Illegal in Some Parts of America. What Changed?



Most of our ancestors wore medical masks every day in 1918 through 1920. I remember my father describing those days when he was a 10 to 12-year-old. My mother was still a toddler in 1918 to 1920 and did not remember the masks herself but she relayed to me a number of stories her older relatives had told later

while she was growing up. Your ancestors undoubtedly wore masks as well, both in the U.S. and in most other countries. The 1918/1920 Spanish Flu pandemic killed millions worldwide and most people in most countries wore masks and took other precautions, such as what we now call “social distancing.”

The following is from a rather interesting article by Paul French in the CNN web site:

When the novel coronavirus pandemic hit Asia, people across the region were quick to wear masks, with some places like Taiwan and the Philippines even making them mandatory in certain scenarios.

But in the West, mask adoption has been far slower, with England’s Chief Medical Officer Chris Whitty, for example, going so far as to claim mask-wearing is unnecessary.

Yet it hasn’t always been the case that mask-wearing is an Asian proclivity.

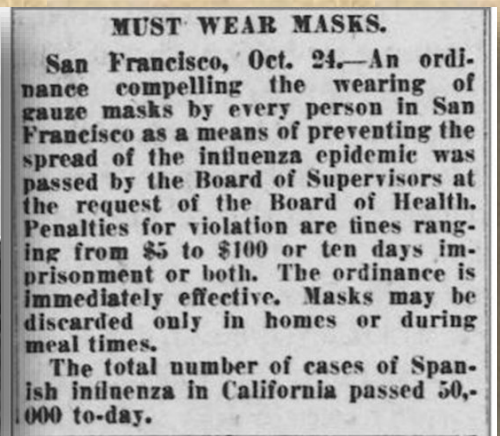
It certainly wasn’t during the influenza pandemic of 1918, which lasted from January 1918 to December 1920, and infected one-third of the world’s population, or about 500 million people, leading to about 50 million deaths — about half a million of which were in the United States.

You can read the entire [article by Paul French](#).

<https://www.cnn.com/2020/04/03/americas/flu-america-1918-masks-intl-hnk/index.html>



Red Cross volunteers wore face masks during the flu pandemic of 1918.



San Francisco flu notice from 1918



See also <https://www.history.com/news/1918-spanish-flu-mask-wearing-resistance>

When Mask-Wearing Rules in the 1918 Pandemic Faced Resistance. Most people complied, but some resisted (or poked holes in their masks to smoke).



Seattle policemen wearing protective gauze face masks during influenza epidemic of 1918 which claimed millions of lives worldwide (Photo by Time Life Pictures/National Archives/The LIFE Picture Collection via Getty Images)



Biofile Benefits!

by Carla Michaels



Carla Michaels & Dr. Phil Upchurch

Phil Upchurch was a master at organizing vast quantities of family history material. The highly organized pencil and paper systems he put in place early on in his research career allowed him to transition to an electronic system that has taken all of his hard work and made it available to anyone with access to a computer! His Master Outlines have been converted to family trees on Ancestry.com, and his paper Biofile system has been digitized and placed online at alliedfamilies.com. In May's newsletter, office manager Jay Buck spoke to why the biofiles are an incredibly powerful research tool. This month, we will explain how we are taking the next step to make them even more useable.

Right now, the key biofiles of Upchurch Clan Heads, their children, grandchildren and their spouses are being transcribed into completely word-searchable documents and placed online at alliedfamilies.com as they are completed. Why is this extra step of transcription necessary? Let me explain! Some of the biofiles are short – a page or two or three and are easily read or skimmed for helpful information. But what about an extensive biofile of 30, 60, or 90+ pages? Finding information in such long, handwritten documents would be daunting. Also, many of the biofiles of the clan heads and their family members are extensive and contain either in-

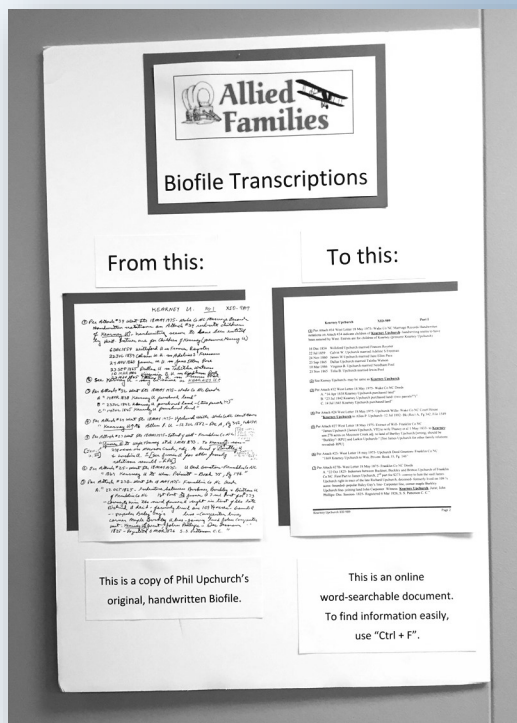
formation not available on the internet or unindexed internet records. Allied Families resident technology wizard, Jay Buck, takes transcribed biofiles, converts them via OCR technology to a completely word-searchable PDF document. (Optical Character Recognition technology enables text within a digital image to be recognized.)

How are we progressing in this project?

1. Biofiles have been scanned and placed online – a huge first step.
2. We have drawn up a "Guide to Transcribing Biofiles" loaded with tips on best practices and how to interpret Phil's system of abbreviations.
3. We have drawn up color-coded charts by clan head of the key biofiles to be transcribed.
4. Volunteers have transcribed 195 of the approximately 800 or so key biofiles.

How can you help?

As you can see by the numbers, there is still a lot of work to be done! Although you will need a computer with the Word program, you don't need to skills other than being able to type and follow the format. To be involved, email Carla Michaels at cjm400@gmail.com and ask to be included. She will send you a short biofile and all the instructions you need to get started. You can even request to work within your own family clan! [Note: The Sherwood Upchurch Clan is complete thanks to the hard work of Hope Blackford!] Once you finish, you will email the completed Word document back to Carla for review and formatting. She will send the biofile to Jay to put on the finishing touches and add to the website.



Accelerate your research with Ancestry Thrulines™

DNA CONNECTIONS

By Brenda Carbon

Do you have thousands of Ancestry DNA matches with names you do not recognize and wonder, “How will I ever know how I am related?” Do you have brick walls in your research or want to expand your tree? Do you want to discover new cousins? Thrulines could be the tool you are looking for!

If you have taken the Ancestry DNA test, built your tree with several generations, and have a public or searchable tree, then try the new Thrulines tool to help you solve these mysteries. How does this work? Ancestry takes

Did you know that Allied Families has embarked upon a DNA analysis initiative? This includes evaluating autosomal DNA testing and Y testing for Upchurch surname males. I am spearheading this initiative and would love to look at your results and see how they match with other Allied Families testers. If you have completed DNA testing or would like to know more about how you can help, please message me. Thank you so much.

Brenda Carbon

Brenda Carbon is Coordinator of UAFA's DNA Project



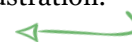
your DNA matches and compares your tree with the trees of your matches and provides any direct ancestry options back through 5th great grandparents.

From your DNA menu, select the Thrulines option and it will take you to the results, displayed by direct ancestor. If you have this ancestor in your tree, the ancestor will be displayed with a solid line around it. Any potential ancestors are those that are not in your tree, but are in the tree(s) of DNA matches of yours. When you select an ancestor, it will take you to the pedigree or tree view with these matches. It will display the potential ancestors and descendants that are not in your chart with dotted lines.

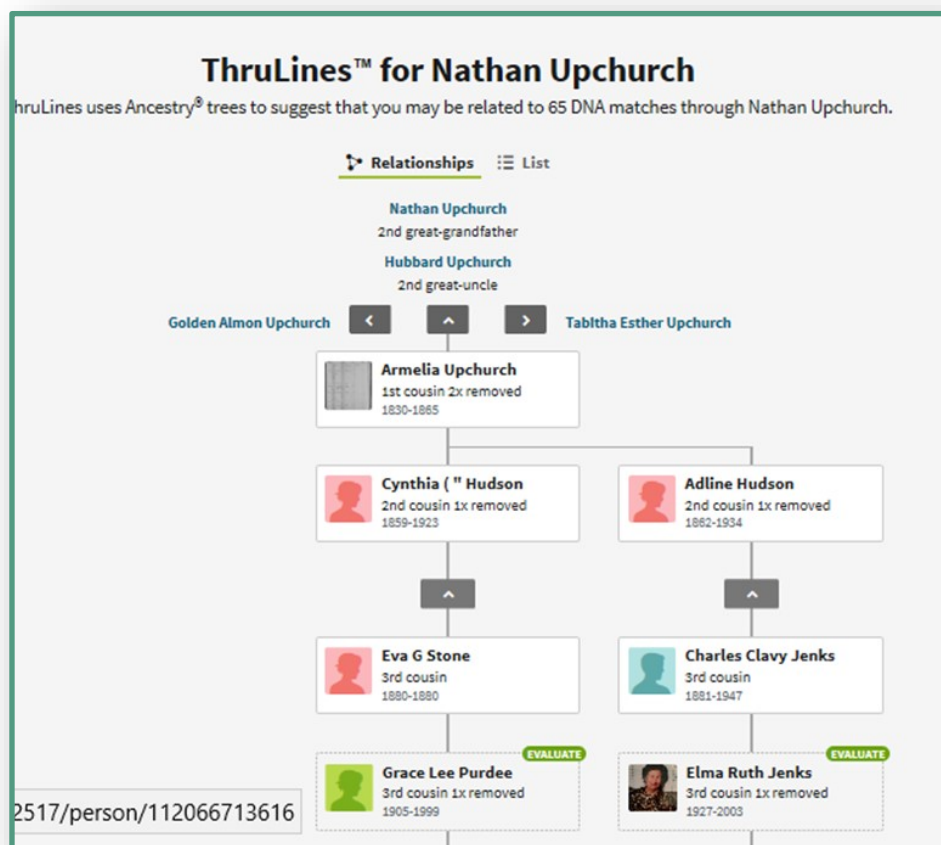
You can select a match and see the records and information that this potential “cousin” has. From there you can research their sources. This is a big help in validating and adding these sources and ancestors and cousins to your tree. Sending them a message is a great way to begin networking with them

Be careful though because the information in Thrulines is only as good as the family trees, so be sure to do your research and validate the information.

Here is a great example. In reviewing Thrulines for Dr. Phil Upchurch through his ancestor Nathan Upchurch, I found matches with descendants of Nathan Upchurch that are not in the Nathan Upchurch tree. See the illustration.



Continued next page

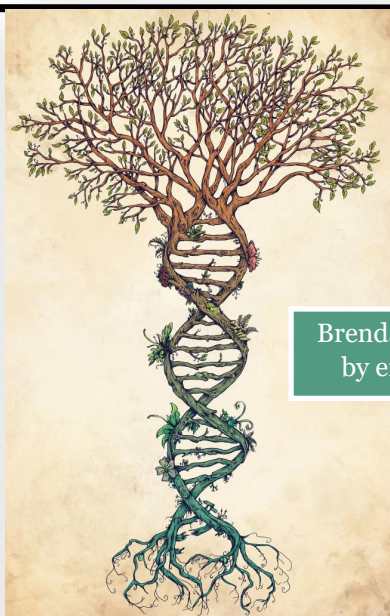


Accelerate your research with Ancestry Thrulines™

Continued from last page—

New descendants are from Grace Lee Purdue through her descendants and Elma Ruth Jenks and her descendant. You can see that Phil matched with a total of 65 descendants of Nathan Upchurch and you can view all of these through the pedigree tree.

I hope you enjoy working with this tool. For a great short video on Thrulines, you may want to view this video at https://www.youtube.com/watch?v=f_7ojgSIFcQ.



Brenda Carbon may be contacted
by email at Italia19@aol.com



Our Upchurch Family— by Cindy Hale

Our Upchurch line descends from Clan 14 / John Upchurch III

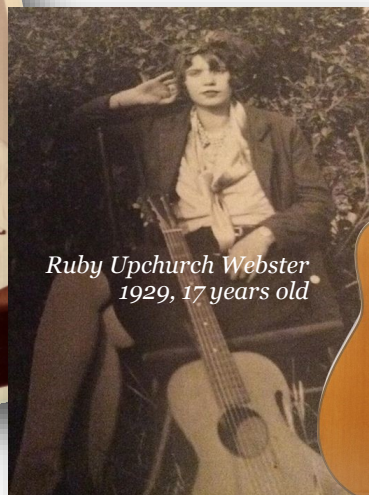


Wm Brady Norman Upchurch

Grandpa William Brady Norman Upchurch was not only a fiddle maker by hobby, he used his hands to create all sorts of things including the rare ukelele shown. Various wood carvings and children's toys were plentiful too. I think Grandpa was most proud of his violins. His treasures were passed down in the family and are still around, a few of which are shown at right, including the child's chair. Brady's four sons (below left) and four daughters Ruby, Helen, Virginia and Jean, inherited musical talents and at least one of Brady's sons crafted some very fine guitars. My brothers and sister and all my many cousins followed suit... all but my mother, Virginia D. Upchurch Hale . . . and me. I'm not sure what happened with us. At least my mother could sing . . .



(L-R) Brady's 4 sons with guitars and banjo.
Syd, Jack, Carl and Dewey Upchurch



Ruby Upchurch Webster
1929, 17 years old



Helen Upchurch Bird

Coincidental Reunion

This is a true story that took place as I recall, in late Fall of 1990.

-Tom Hale

It is Wednesday afternoon and nearing the time when my wife, Patty, is typically due at the Charlottesville train station. She is returning home after her usual week of study at the University of Maryland. This day, however, is not typical. Snow has been blowing all night and all morning ultimately leaving her and the train stranded outside of a small town somewhere between there and here.

Knowing that no estimated time of arrival has been announced, I head for the station anyway, so I am there when she does arrive. Walking through the door, my ears fill with the low din of unintelligible chatter echoing off hard plaster walls and tile floor. I glance around at the molded plastic seats in search of a suitable space to pass the time.

As I scan the lounge, I am completely perplexed when I see my mother (Virginia). Well actually, all I see is the back of this woman's head and shoulders since she is seated facing away from me. However, the shape of her head and the wave of her snow white, shoulder length, hair looks like my mother.

Mom, I say to myself in disbelief? This makes no sense. Mom is in Albuquerque almost 2000 miles away.

Certainly, she would have told me if she was coming this way. With my eyes fixed on her, I slowly walk to the end of a row of chairs on which she is seated. Surely once I see her profile this mirage will disappear.

I round the corner and walk down the aisle as her so-familiar face comes into view. She looks up as I step into her field of vision. "Hello," I say in a hesitant sort of way. Only then do I realize that this is NOT my

go. Short in stature with short, curly, brown hair, and a sparkle in her eye. Without missing a beat, Helen exclaims: "Ruby! I leave you alone for only five minutes, come back and find you in the arms of a man!" Those Upchurches have a quick wit and keen sense of humor.

What are you two doing here, I ask? "Ruby came to visit me in Chicago," Helen explains "and we are on our way to Charlotte to visit Opal." Opal Taylor is their double first cousin. So, as it turns out, Ruby and Helen are scheduled to transfer to the very train on which my wife is stranded.

Well ladies, the train will be delayed for at least another hour. Are you interested in a mini tour of Charlottesville while we are waiting? So, Ruby, Helen, and I pile into the cab of my pickup truck and away we go for a spin around downtown and the University of Virginia through the snow.

From the old rail station, we drive down Main Street, cut through 5th and Market Streets to the old Courthouse Square. Down High Street to Preston, 10th street, and University Avenue, we pass by the Rotunda, the statue of Thomas Jefferson, and the University Chapel. Down Emmet, up Jefferson Park Avenue, then Main Street back to the Rail Station. We enter the station to good news: the train is steaming toward Charlottesville and not too far away.

Continued next page—

by Tom Hale



"Those Upchurches have a quick wit and keen sense of humor."

mother, but my mother's sister, Ruby! This is equally as odd since Ruby also lives in Albuquerque.

My Aunt Ruby, as surprised to see me as I am her says "Well, Hello there. What on earth are you doing here," in her North Carolinian turned New Mexican sort of drawl, then stands up and gives me a big hug and kiss.

Just then who walks through the door, but my Aunt Helen from Chica-

Coincidental Reunion... *Continued from page 11*

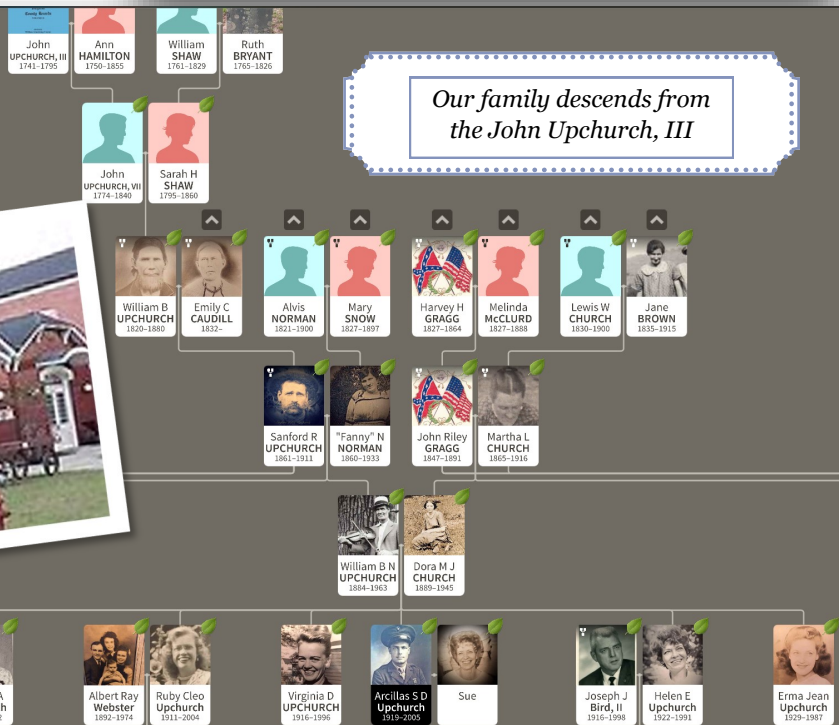
As the loud rumble gives way to the hiss of air brakes and squeal of steel wheels; I help Ruby and Helen as they scramble for a car while Patty, disembarks another. Patty caught up to us just in time to see Ruby and Helen wave and throw a kiss goodbye.



Thomas P. Hale is retired and lives in Virginia with his wife Patty (Hirsh) Hale, PhD. He is a talented writer, whose most recent work (June, 2020) is an historical WWII memoir titled **Letters**



Home —*The WWII Navy Experience of Samuel D. Hale.* Also, I am proud to say that Tom is this editor's brother!



Upchurch, John Jordan (26 Mar. 1820–18 Jan. 1887)

John Jordan Upchurch, founder of the Ancient Order of United Workmen, was born on a farm in [Franklin County](#), one of four children of Ambrose and Elizabeth Hill Upchurch. After 1824, when his father was shot and killed by his wife's brother-in-law, Upchurch and his mother first lived with his grandfather Upchurch and then on a small farm purchased by his grandfather Hill. He received a limited education "as the opportunity offered." In 1837 he left the farm to learn the trade of millwright but gave it up because he was too frail. Subsequently, he was apprenticed as a carpenter but again discovered that he was not strong enough for the occupation and took employment at Henderson as a clerk until 1841.

On 1 June 1841 Upchurch married Angelina Zeigenfuss Green, a Pennsylvanian, the niece of John Zeigenfuss. About the same time, Zeigenfuss and Upchurch opened a hotel in [Raleigh](#). Under the influence of the [temperance movement](#), they converted it into what Upchurch called "the first temperance house" south of the Mason-Dixon Line. When business fell off, they had to close the hotel, and Zeigenfuss went back to Pennsylvania in 1844. In the meantime, Upchurch had learned to be an engraver and a [silversmith](#) and briefly operated an engraving shop. Leaving Raleigh in late 1845, he was unsuccessful in finding suitable permanent employment. For a brief period, he acted as a horse tamer and horse trader in Georgia, South Carolina, and North Carolina and accumulated resources with which to support a move to Pennsylvania in October 1846.

There Upchurch took a job first with the Philadelphia and Reading Railroad and later with the Catasauqua Iron



by John M. Martin (1996)



John Jordan Upchurch

Works. Still later he went to work for the Mine Hill and Schuylkill Haven Railroad, where he remained for thirteen years as foreman and master mechanic. In June 1864, when train workers struck after management refused to meet their demands, Upchurch ran the railroad with men provided by the War Department. Two weeks later the strike was broken. Concluding that the strike was not in the best interest of workers, Upchurch determined to develop a system

that would harmonize the interests of capital and labor. In January 1865 he became involved in an unsuccessful venture with an oil company. He went to Alabama in 1866 to work with a railroad company but soon moved back to Pennsylvania because of his health. After holding two short-term jobs in Pennsylvania, he took a position with the Atlantic and Great Western Railroad in Meadville, Pa., in April 1868.

At Meadville Upchurch joined the League of Friendship, Supreme Mechanical Order of the Sun. The Meadville lodge soon split, and Upchurch took the lead in organizing Jefferson Lodge No. 1 of the Ancient Order of the United Workmen on 27 Oct. 1868. Objectives of the order were to "create and foster a more friendly and cooperative feeling" among those who had a common interest and to use all possible "legitimate means" to adjust differences that

might arise between employers and employees. Strikes were to be countenanced only when "absolutely necessary." In addition, the order was authorized to provide life insurance for members. A year later, when a per capita assessment of one dollar was levied to pay death benefits to members, the order was transformed into a fraternal benefit society that became a model for other

Continued on next page

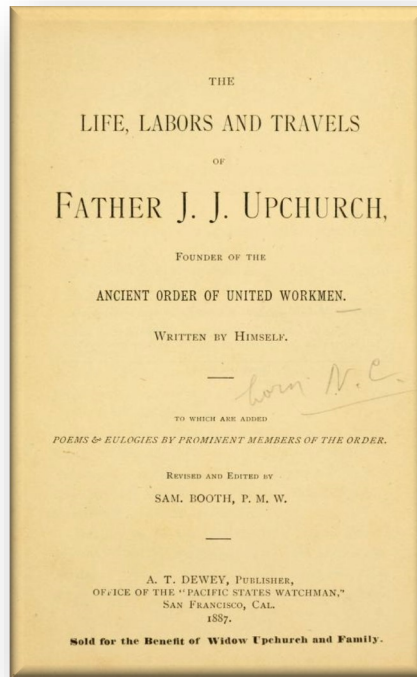
Upchurch, John Jordan...

Continued from previous page

similar societies. After early dissension in the AOUW unity was attained in 1873, and Upchurch was named past supreme master workman. Growth of the AOUW and other fraternal societies was stimulated by the need of workers for aid in the payment of expenses related to sickness, old age, and death. Because of his association with the AOUW, Upchurch is generally regarded as the founder of the mutual benefit system, which by 1919 included two hundred fraternal societies in the United States and Canada with some 9 million members. Throughout the country he was greeted as "Father" Upchurch and hailed as a benefactor.

In 1873 Upchurch moved to Missouri and worked for a number of employers until 1881; from 1881 to 1887 he apparently had no regular employment. While making an extensive tour of the West in 1885, he was introduced as the founder of "poor man's insurance, the widow's support, and the orphan's help." In 1886 he made a similar tour in the East including visits to Boston and Philadelphia. In Philadelphia he said that the AOUW had done more to cure poverty and degradation than any other group. His autobiography, [*Life, Labor, and Travels of Father J. J. Upchurch*](#), was edited and published after his death.

Upchurch was the father of fifteen children, eleven boys and four girls. Throughout his life he had difficulties because of his large family, ill health, and irregular employment. He died at Steelville, Mo., and was buried at Bellefontaine Cemetery, St. Louis.



References:

[Walter Basye, *History and Operation of Fraternal Insurance* \(1919\).](#)

[Life, Labor, and Travels of Father J. J. Upchurch, Founder of the Ancient Order of United Workmen, Written by Himself \(1887\).](#)

Arthur Preuss, comp., *A Dictionary of Secret and Other Societies* (1924).

Raleigh News and Observer, 6 Feb. 1938.

[M. W. Sackett, *Early History of Fraternal Beneficiary Societies in America* \(1914\).](#)

Saint Louis Globe-Democrat, 19 Jan. 1887.

Additional Resources:

"Fiftieth Anniverary of the A.O.U.W." *The Fraternal Monitor* 29, no. 4 (November 1, 1918). 5-8. <http://books.google.com/books?id=6GDnAAAAMAAJ&pg=PA69#v=onepage&q&f=false>

Biographical Appendix. *History of Franklin, Jefferson, Washington, Crawford & Gasconade counties, Missouri: From the earliest time to the present: together with sundry personal, business and professional sketches ad numerous family records.* Cape Girardeau, Missouri: Ramfre Press. 1958. 1066-1067. <https://archive.org/stream/historyoffrankli00cape#page/1066/mode/2up> (accessed August 15, 2013).

Upchurch, David E. *Fraternal beginnings: a biography of the father of Fraternalism, John Jordan Upchurch.* United States: Woodmen of the World/Omaha Woodmen Life Insurance Society. 2002.

Image Credits:

"J. J. Upchurch." *The life, labors and travels of Father J.J. Upchurch : founder of the Ancient Order of United Workmen.* San Francisco, Cal.: A.T. Dewey. 1887. Internet Archive. <https://archive.org/stream/lifelaborstravel00upc#page/n7/mode/2up> (accessed August 15, 2013).

Subjects:

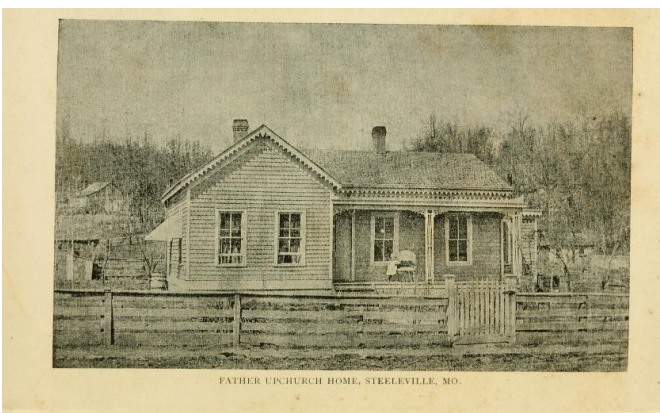
[Biography](#)
[Societies, clubs, and organizations](#)
[UNC Press](#)

Origin - location:

[Franklin County](#)
[Raleigh](#)

From:

[Dictionary of North Carolina Biography, University of North Carolina Press.](#)



Father Upchurch Home, Steelville, MO



OLD HOMESTEADS



The George Eugene Upchurch, (Sr.) House is the older of two houses built by brothers in the late 19th century. The house features a triple-A roof, exterior rear brick chimneys, and Victorian details including a wrap-around porch, fishscale shingles in the gables, and original front door with rounded glazed panels. Interior details include wood flooring, wood sheathing throughout, chevron patterned sheathing in entrance hall, historic floor plan and original mantels.



The George Upchurch House built about 1895
1024 Waldo Road Blvd. Cary, North Carolina

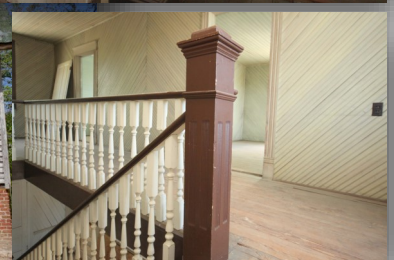
Standard Pacific donated the house and a tract across the road from the original site to Capital Area Preservation, Inc (CAP). CAP stabilized the house on the new site and sold it with a preservation easement and rehabilitation agreement. The house is currently listed on the National Register Study List.

We will feature the home of Rufus Merrimon Upchurch in the next FOOTPRINTS issue. —Editor

This family descends from
Clan 3 Nathan Upchurch, I

The history of this house begins when George Upchurch (born 1870) purchased 67 acres for \$1,200 from his parents William B. and Sally Upchurch and two other nearby tracts in 1894, about a year after his marriage. His brother Rufus Merrimon Upchurch bought an adjoining 128 acres from his parents for \$800 in 1896. Despite the severe economic hardships following the depression of 1893, these two brothers were able to build substantial residences on their small farms by following in their father's footsteps and growing the lucrative and increasingly popular bright leaf tobacco.

The move became necessary after Standard Pacific Homes of the Carolinas, LLC purchased the original tract for a townhome development. In order to preserve the house,



Two weeks of free access to Ancestry®?
Yes please.



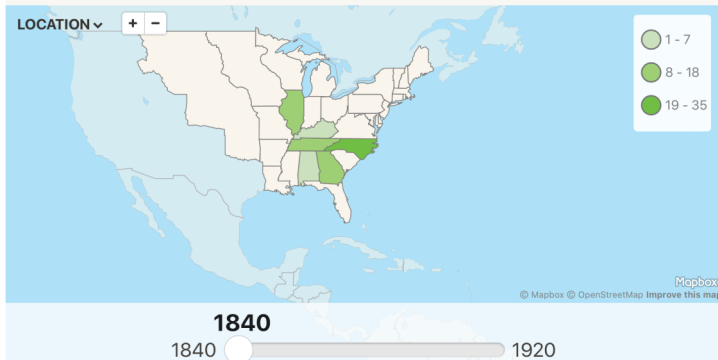


Start your Free trial



Quick View: Where is the Upchurch Family From?

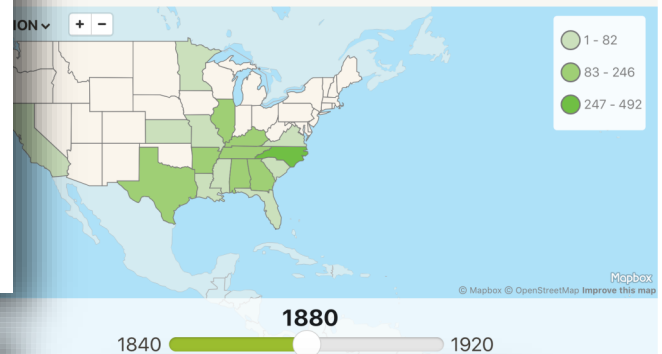
Where is the Upchurch family from?



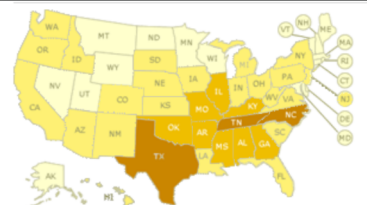
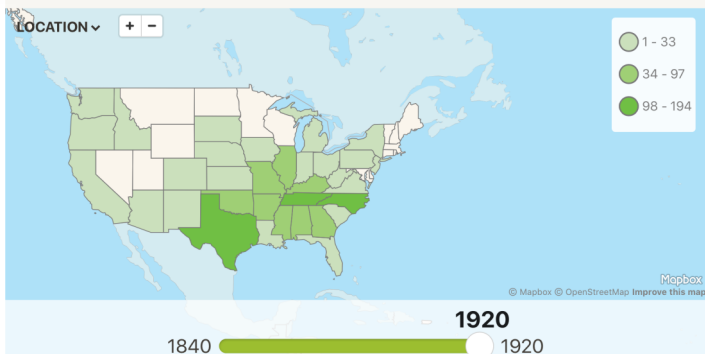
Diagrams courtesy of Ancestry.com

Family Origin

Where is the Upchurch family from?



Where is the Upchurch family from?



Upchurch families by state in 1920

98 - 194 1 - 33
34 - 97 0

According to the 1920 U.S. Federal Census Data

Military Column: Upchurches in the Civil War



The Civil War was the first war in American history in which a substantial proportion of the adult male population participated. Almost every American would have known friends, family members, or neighbors who marched off to war, many never to return. The service records of these men, North and South, are contained in the Civil War Soldiers and Sailors System.



Please note that the Civil War Soldiers and Sailors System contains just an index of the men who served in the Civil War with only rudimentary information from the service records (including name, rank and unit in which they served). The full service



records are housed at the National Archives and Records Administration. Click here for information about obtaining copies of those records, using the film number in the Civil War Soldiers and Sailors System record.



The identity of the soldiers pictured here are not known.

Additionally, all records in this database have been transcribed from the National Archives' original documents; alternate names and/or misspellings are recorded as initially documented.

[Ancestry US Civil War Soldiers - https://www.ancestry.com/search/collections/1138/](https://www.ancestry.com/search/collections/1138/)

National Archives - [Home](#) > [Research Our Records](#) > [Military Records](#) > [Civil War](#)
<https://www.archives.gov/research/military/civil-war> Free records search.

This database is a result of an Ancestry search made by your Editor. You must be an Ancestry member to access the **View Record** links at left. Basic Ancestry is about \$20.00 monthly. A two-week free trial is available—see previous page for link (page 16). National Archives records are free.

View Record	Name	Regiment Name	Side	Regiment State/Origin
View Record	Shadrach T. Upchurch	30th Regiment, Kentucky Infantry	Union	Kentucky
View Record	Benjamin Upchurch	9th Regiment, Mississippi Infantry	Confederate	Mississippi
View Record	Joseph Upchurch	19th Regiment, Arkansas Infantry (Dockery's)	Confederate	Arkansas
View Record	Drury Upchurch	Beaty's Company, Tennessee Independent Mounted Scouts	Union	TN
View Record	James Upchurch	3rd Regiment, Georgia Infantry	Confederate	Georgia
View Record	William R. Upchurch	52nd Regiment, North Carolina Infantry	Confederate	North Carolina
View Record	David H. Upchurch	36th Regiment, Arkansas Infantry	Confederate	Arkansas
View Record	Henry A. Upchurch	8th Regiment, Missouri Cavalry	Confederate	Missouri
View Record	W.A. Upchurch	7th Regiment, Kentucky Mounted Infantry	Confederate	Kentucky
View Record	W.M. Upchurch	35th Regiment, North Carolina Infantry	Confederate	North Carolina
View Record	Samuel Upchurch	18th Regiment, Illinois Infantry	Union	Illinois
View Record	J. M. Upchurch	Madison's Regiment, Texas Cavalry (Phillips') (3rd Regiment, Arizona Brigade		
View Record	T.C. Upchurch	24th Regiment, Arkansas Infantry	Confederate	Arkansas

Continued next page



Military Column:

Continued from page 17

View Record	Winship Upchurch	6th Regiment, North Carolina Infantry	Confederate	North Carolina
View Record	Ross Upchurch	4th Regiment, Tennessee Cavalry (Murray's)	Confederate	Tennessee
View Record	John W. Upchurch	13th Regiment, Illinois Cavalry	Union	Illinois
View Record	N.B. Upchurch	33rd Regiment, North Carolina Infantry	Confederate	North Carolina
View Record	John J. Upchurch	30th Regiment, Kentucky Infantry	Union	Kentucky
View Record	J.K. Upchurch	60th Regiment, Alabama Infantry	Confederate	Alabama
View Record	G. W. Upchurch	5th Regiment, Tennessee Infantry	Confederate	Tennessee
View Record	Echerd Upchurch	17th Regiment, Tennessee Infantry	Confederate	Tennessee
View Record	William Upchurch	1st Regiment, Tennessee Mounted Infantry	Union	Tennessee
View Record	H. R. Upchurch	Marshall's Company, Tennessee Artillery (Steuben Artillery)	Confederate	TN
View Record	H. R. Upchurch	16th Regiment, Tennessee Infantry	Confederate	Tennessee
View Record	C. R. Upchurch	25th Regiment, Tennessee Infantry	Confederate	Tennessee
View Record	John D. Upchurch	128th Regiment, Illinois Infantry	Union	Illinois
View Record	A. Mc.D. Upchurch	15th Regiment, North Carolina Infantry	Confederate	North Carolina
View Record	Calvin W. Upchurch	1st Regiment, North Carolina Infantry	Confederate	North Carolina
View Record	Thomas Upchurch	4th Regiment, Tennessee Cavalry	Confederate	Tennessee
View Record	J.M. Upchurch	35th Regiment, North Carolina Infantry	Confederate	North Carolina
View Record	Dal H. Upchurch	31st Regiment, North Carolina Infantry	Confederate	North Carolina
View Record	H.L. Upchurch	25th Battalion, Georgia Infantry (Provost Guard)	Confederate	Georgia
View Record	F.M. Upchurch	53rd Regiment, Georgia Infantry	Confederate	Georgia
View Record	Jasper Upchurch	44th Regiment, Georgia Infantry	Confederate	Georgia
View Record	J.W. Upchurch	17th Regiment, Alabama Infantry	Confederate	Alabama
View Record	A.H. Upchurch	23rd Regiment, North Carolina Infantry	Confederate	North Carolina
View Record	W.J. Upchurch	7th Regiment, Confederate Cavalry (Claiborne's Partisan Rangers)	Confederate	Confederate Troops
View Record	C. Upchurch	37th Regiment, Alabama Infantry	Confederate	Alabama
View Record	William Upchurch	Mann's Regiment, Texas Cavalry (Bradford's)	Confederate	Texas
View Record	William H. Upchurch	15th Regiment, North Carolina Infantry	Confederate	NC
View Record	E.S. Upchurch	13th Regiment, Georgia Infantry	Confederate	Georgia
View Record	A.R. Upchurch	Hilliard's Legion, Alabama Volunteers	Confederate	Alabama
View Record	Benjamin M. Upchurch	18th Regiment, Illinois Infantry	Union	Illinois
View Record	W.A. Upchurch	Mallett's Battalion, North Carolina Camp Guards (Camp Holmes)	Confederate	NC
View Record	Cal. Upchurch	42nd Regiment, Alabama Infantry	Confederate	Alabama
View Record	James M. Upchurch	37th Regiment, Texas Cavalry (Terrell's)	Confederate	Texas
View Record	B.A.A.B. Upchurch	13th Battalion, North Carolina Light Artillery	Confederate	NC
View Record	Michael Upchurch	46th Regiment, Alabama Infantry	Confederate	Alabama
View Record	Charles P. Upchurch	Snead's Company, North Carolina Local Defense	Confederate	NC
View Record	Name	Regiment Name	Side	Regiment State/Origin
View Record	Dallas H. Upchurch	1st Regiment, North Carolina Infantry	Confederate	North Carolina
View Record	J. F. Upchurch	46th Regiment, Tennessee Infantry	Confederate	Tennessee
View Record	C. Upchurch	Rogers' Company, Mississippi	Confederate	Mississippi
View Record	Berry Upchurch	17th Regiment, Alabama Infantry	Confederate	Alabama
View Record	William Upchurch	3rd Regiment, Arkansas Cavalry	Union	Arkansas
View Record	J. F. Upchurch	20th Regiment, Tennessee Cavalry (Russell's)	Confederate	Tennessee

Continued next page



Military Column:

Continued from page 18

View Record	John S. Upchurch	4th Regiment, United States Colored Heavy Artillery Union	U.S. Colored Troops
View Record	C. Upchurch	1st Regiment, North Carolina Junior Reserves	Confederate NC
View Record	Thomas Upchurch	8th Regiment, Tennessee Cavalry (Smith's)	Confederate Tennessee
View Record	James A. Upchurch	18th Regiment, Texas Cavalry (Darnell's)	Confederate Texas
View Record	John T. Upchurch	5th Regiment, Tennessee Infantry	Confederate Tennessee
View Record	John Upchurch	53rd Regiment, Indiana Infantry	Union Indiana
View Record	G. W. Upchurch	3rd Consolidated Regiment, Tennessee Infantry	Confederate Tennessee
View Record	Allinder B. Upchurch	1st Regiment, North Carolina Infantry	Confederate NC
View Record	J.M. Upchurch	3rd Regiment, North Carolina Cavalry	Confederate NC
View Record	Harvey M. Upchurch	17th Regiment, Alabama Infantry	Confederate Alabama
View Record	T. Ross Upchurch	22nd Battalion, Tennessee Infantry (Murray's)	Confederate Tennessee
View Record	William S. Upchurch	58th Regiment, North Carolina Infantry	Confederate NC
View Record	C. Upchurch	3rd Regiment, Georgia Reserves	Confederate Georgia
View Record	J.K. Upchurch	1st Regiment, South Carolina Artillery	Confederate SC
View Record	Isaac Upchurch	4th Regiment, United States Colored Heavy Artillery	Union U.S. Colored Troops
View Record	Archibald M.D. Upchurch	15th Regiment, North Carolina Infantry	Confederate NC
View Record	J. M. Upchurch	Terry's Regiment, Texas Cavalry	Confederate Texas
View Record	C. H. Upchurch	4th Regiment, Tennessee Infantry (Neely's)	Confederate Tennessee
View Record	Charles D. Upchurch	Snead's Company, North Carolina Local Defense	Confederate NC
View Record	Robert J. Upchurch	11th Regiment, Alabama Infantry	Confederate Alabama
View Record	David H. Upchurch	3rd Regiment, Arkansas Cavalry	Union Arkansas
View Record	Thomas J. Upchurch	47th Regiment, North Carolina Infantry	Confederate NC
View Record	N.P. Upchurch	7th Battalion, Mississippi Infantry	Confederate Mississippi
View Record	Lafayette Upchurch	130th Regiment, Illinois Infantry	Union Illinois
View Record	J.W. Upchurch	56th Regiment, Georgia Infantry	Confederate Georgia
View Record	A.J. Upchurch	1st Regiment, North Carolina Cavalry	Confederate NC
View Record	James M. Upchurch	44th Regiment, Georgia Infantry	Confederate Georgia
View Record	A. Upchurch	42nd Regiment, Alabama Infantry	Confederate Alabama
View Record	B.J. Upchurch	1st Regiment, North Carolina Infantry	Confederate NC
View Record	A.J. Upchurch	20th Regiment, Alabama Infantry	Confederate Alabama
View Record	Winship Upchurch	1st Regiment, US Veteran Volunteer Infantry	Union Union Volunteers
View Record	L. Upchurch	17th Regiment, Alabama Infantry	Confederate Alabama
View Record	Sidney Upchurch	3rd Battalion, North Carolina Senior Reserves	Confederate NC
View Record	Alvin L. Upchurch	30th Regiment, Kentucky Infantry	Union Kentucky
View Record	A. H. Upchurch	17th Regiment, Tennessee Infantry	Confederate Tennessee
View Record	Benjamin N. Upchurch	8th Regiment, Mississippi Infantry	Confederate Mississippi
View Record	Thomas Upchurch	22nd Battalion, Tennessee Infantry (Murray's)	Confederate Tennessee
View Record	J.F. Upchurch	8th Battalion, North Carolina Cavalry (Partisan Rangers)	Confederate NC
View Record	William L. Upchurch	145th Regiment, Illinois Infantry (100 days, 1864)	Union Illinois
View Record	Frank Upchurch	22nd Regiment, Illinois Infantry	Union Illinois
View Record	A. Upchurch	8th Regiment, Texas Infantry (Hobby's)	Confederate Texas

Continued next page



Military Column:

Continued from page 19

View Record	Name	Regiment Name	Side	Regiment State/Origin
View Record	J.M. Upchurch	53rd Regiment, Georgia Infantry	Confederate	Georgia
View Record	William Upchurch	10th Regiment, Georgia Cavalry (State Guards)	Confederate	Georgia
View Record	Hansel Upchurch	8th Regiment, North Carolina Senior Reserves	Confederate	NC
View Record	J. S. Upchurch	44th Consolidated Regiment, Tennessee Infantry	Confederate	Tennessee
View Record	Benjamin W. Upchurch	13th Regiment, North Carolina Infantry	Confederate	NC
View Record	Wesley Upchurch	5th Regiment, North Carolina Senior Reserves	Confederate	NC
View Record	Thomas C. Upchurch	35th Regiment, Tennessee Infantry (5th Infantry) (1st Mountain Rifle Regiment)	Confederate	Tennessee
View Record	S.W. Upchurch	Zimmerman's Battery, Arkansas Light Artillery	Confederate	Arkansas
View Record	James Upchurch	22nd Battalion, Tennessee Infantry (Murray's)	Confederate	Tennessee
View Record	Benjamin Upchurch	31st Regiment, Arkansas Infantry	Confederate	Arkansas
View Record	M. Upchurch	46th Regiment, Alabama Infantry	Confederate	Alabama
View Record	J. William Upchurch	35th Regiment, Tennessee Infantry (5th Infantry) (1st Mountain Rifle Regiment)	Confederate	Tennessee
View Record	Shadrak Upchurch	39th Regiment, Kentucky Infantry	Union	Kentucky
View Record	I.S. Upchurch	16th Regiment, North Carolina Infantry	Confederate	NC
View Record	Oliver P. H. Upchurch	37th Regiment, Texas Cavalry (Terrell's)	Confederate	Texas
View Record	Vinson P. Upchurch	17th Regiment, Alabama Infantry	Confederate	Alabama
View Record	Calvin Upchurch	5th Regiment, Kentucky Mounted Infantry	Confederate	Kentucky
View Record	Carter Upchurch	25th Regiment, Tennessee Infantry	Confederate	Tennessee
View Record	Williford Upchurch	6th Regiment, North Carolina Infantry	Confederate	NC
View Record	T.C. Upchurch	Hardy's Regiment, Arkansas Infantry	Confederate	Arkansas
View Record	J.R. Upchurch	7th Regiment, Virginia Infantry	Confederate	Virginia
View Record	A. Upchurch	4th Battalion, Texas Artillery (Shea's)	Confederate	Texas
View Record	Calvin Upchurch	2nd Regiment, Alabama Infantry	Confederate	Alabama
View Record	C.H. Upchurch	25th Regiment, Arkansas Infantry	Confederate	Arkansas
View Record	Benjamin Upchurch	2nd Regiment, North Carolina Artillery	Confederate	NC
View Record	M. Upchurch	3rd Battalion, Mississippi Infantry (State Troops)	Confederate	Mississippi
View Record	Burton Upchurch	42nd Regiment, Alabama Infantry	Confederate	Alabama
View Record	N.S. Upchurch	2nd Regiment, Florida Cavalry	Confederate	Florida
View Record	Thomas A. Upchurch	3rd Regiment, Arkansas Cavalry	Union	Arkansas
View Record	Samuel R. Upchurch	128th Regiment, Illinois Infantry	Union	Illinois
View Record	D.C. Upchurch	120th Regiment, Illinois Infantry	Union	Illinois
View Record	Lafayette Upchurch	77th Regiment, Illinois Infantry	Union	Illinois
View Record	L.A. Upchurch	44th Regiment, Georgia Infantry	Confederate	Georgia
View Record	Winslow Upchurch	6th Regiment, North Carolina Infantry	Confederate	NC
View Record	John W. Upchurch	47th Regiment, North Carolina Infantry	Confederate	NC
View Record	Richard Upchurch	47th Regiment, North Carolina Infantry	Confederate	NC
View Record	Davis H. Upchurch	31st Regiment, Arkansas Infantry	Confederate	Arkansas
View Record	James C. Upchurch	13th Regiment, Texas Volunteers	Confederate	Texas
View Record	R. L. Upchurch	45th Regiment, Tennessee Infantry	Confederate	Tennessee
View Record	Albert E. Upchurch	55th Regiment, North Carolina Infantry	Confederate	NC
View Record	J.N. Upchurch	1st Regiment, North Carolina Cavalry	Confederate	NC

Continued next page



Military Column:

Continued from page 20

View Record	J. C. Upchurch	20th Regiment, Texas Infantry (Elmore's)	Confederate	Texas
View Record	Lloyd H. Upchurch	44th Regiment, Georgia Infantry	Confederate	Georgia
View Record	Daniel Upchurch	34th Regiment, North Carolina Infantry	Confederate	NC
View Record	A.N. Upchurch	39th Regiment, North Carolina Infantry	Confederate	North Carolina
View Record	James Upchurch	35th Regiment, North Carolina Infantry	Confederate	North Carolina
View Record	O.H. Upchurch	1st Regiment, North Carolina Junior Reserves	Confederate	North Carolina
View Record	T. S. Upchurch	17th Regiment, Tennessee Infantry	Confederate	Tennessee
View Record	Frank M. Upchurch	5th Regiment, Tennessee Infantry	Confederate	Tennessee
View Record	David C. Upchurch	120th Regiment, Illinois Infantry	Union	Illinois
View Record	Joseph Upchurch	47th Regiment, North Carolina Infantry	Confederate	North Carolina
View Record	Bennett A.A.B. Upchurch	2nd Regiment, North Carolina Artillery	Confederate	NC
View Record	Stephen A. Upchurch	120th Regiment, Illinois Infantry	Union	Illinois
View Record	Job Upchurch	4th Regiment, Missouri Infantry State Guard (1st Division)	Confederate	MO
View Record	B. H. Upchurch	20th Regiment, Tennessee Cavalry (Russell's)	Confederate	Tennessee
View Record	Churchwill Upchurch	Berry's Company, Mississippi Infantry Reserves	Confederate	Mississippi
View Record	Shadrach Upchurch	30th Regiment, Kentucky Infantry	Union	Kentucky
View Record	Osburn Upchurch	Hilliard's Legion, Alabama Volunteers	Confederate	Alabama
View Record	Parker Upchurch	47th Regiment, North Carolina Infantry	Confederate	North Carolina
View Record	W. G. Upchurch	7th Regiment, Tennessee Cavalry (Duckworth's)	Confederate	Tennessee
View Record	William Upchurch	50th Regiment, North Carolina Infantry	Confederate	North Carolina
View Record	Lindaman Upchurch	1st Regiment, North Carolina Infantry	Confederate	North Carolina
View Record	Thomas A. Upchurch	36th Regiment, Arkansas Infantry	Confederate	Arkansas
View Record	A.J. Upchurch	Clark's Special Battalion, North Carolina Militia	Confederate	North Carolina
View Record	Will H. Upchurch	26th Regiment, North Carolina Infantry	Confederate	North Carolina
View Record	William A. Upchurch	36th Regiment, Arkansas Infantry	Confederate	Arkansas
View Record	Joseph E. Upchurch	56th Regiment, Georgia Infantry	Confederate	Georgia
View Record	K. Upchurch	8th Regiment, Florida Infantry	Confederate	Florida
View Record	J.W. Upchurch	39th Regiment, Georgia Infantry	Confederate	Georgia
View Record	Caswell B. Upchurch	3rd Regiment, Illinois Cavalry	Union	Illinois
View Record	H.T. Upchurch	25th Battalion, Georgia Infantry (Provost Guard)	Confederate	Georgia
View Record	John Upchurch	42nd Regiment, Alabama Infantry	Confederate	Alabama
View Record	Ascus H. Upchurch	28th Regiment, Tennessee Infantry (2nd Tennessee Mountain Volunteers)	Confederate	Tennessee
View Record	William Upchurch	Mann's Battalion, Texas Cavalry	Confederate	Texas
View Record	Shadrach Upchurch	30th Regiment, Kentucky Infantry	Union	Kentucky
View Record	Sion M. Upchurch	55th Regiment, North Carolina Infantry	Confederate	North Carolina
View Record	Buckley Upchurch	47th Regiment, North Carolina Infantry	Confederate	North Carolina
View Record	Theodore P. Upchurch	127th Regiment, Pennsylvania Infantry	Union	Pennsylvania
View Record	Thomas Upchurch	7th Regiment, North Carolina Infantry	Confederate	North Carolina
View Record	Jack Upchurch	39th Regiment, Mississippi Infantry	Confederate	Mississippi
View Record	Joshua S. Upchurch	55th Regiment, Tennessee Infantry (McKoin's)	Confederate	Tennessee
View Record	J.W. Upchurch	32nd Regiment, North Carolina Infantry (Lenoir Braves)	Confederate	NC
View Record	Robert Upchurch	Louisiana Reserve Corps	Confederate	Louisiana
View Record	P.B. Upchurch	15th Regiment, North Carolina Infantry	Confederate	North Carolina

Continued next page



Military Column:

Continued from page 21

View Record	W.M. Upchurch	10th Regiment, Georgia Cavalry (State Guards)	Confederate	Georgia
View Record	T.H. Upchurch	8th Regiment, Alabama Cavalry (Hatch's)	Confederate	Alabama
View Record	William Upchurch	35th Regiment, North Carolina Infantry	Confederate	North Carolina
View Record	Cyrus Upchurch	21st Regiment, Texas Cavalry (1st Texas Lancers)	Confederate	Texas
View Record	Joshua Upchurch	44th Consolidated Regiment, Tennessee Infantry	Confederate	Tennessee
View Record	John E. Upchurch	110th Regiment, Illinois Infantry	Union	Illinois
View Record	James C. Upchurch	3rd Regiment, Texas Infantry	Confederate	Texas
View Record	J.B. Upchurch	47th Regiment, North Carolina Infantry	Confederate	North Carolina
View Record	Henderson Upchurch	Beaty's Company, Tennessee Independent Mounted Scouts	Union	TN
View Record	B.A.B. Upchurch	13th Battalion, North Carolina Light Artillery	Confederate	NC
View Record	J.H. Upchurch	6th Regiment, North Carolina Infantry	Confederate	North Carolina
View Record	B.N. Upchurch	7th Battalion, Mississippi Infantry	Confederate	Mississippi
View Record	John Upchurch	39th Regiment, Mississippi Infantry	Confederate	Mississippi
View Record	J. K. Upchurch	35th Regiment, Tennessee Infantry (5th Infantry) (1st Mountain Rifle Regiment)	Confederate	Tennessee
View Record	W.B. Upchurch	56th Regiment, Georgia Infantry	Confederate	Georgia
View Record	J. A. Upchurch	22nd Regiment, Tennessee Infantry (Freeman's)	Confederate	Tennessee
View Record	Name	Regiment Name	Side	Regiment State/Origin
View Record	James A. Upchurch	30th Regiment, Texas Cavalry (Gurley's) (1st Texas Partisan Rangers)	Confederate	Texas
View Record	Henry Upchurch	13th Regiment, Georgia Infantry	Confederate	Georgia
View Record	Wm. Upchurch	5th Regiment, Alabama Cavalry	Confederate	Alabama
View Record	Alexander Upchurch	22nd Regiment, Illinois Infantry	Union	Illinois
View Record	W. Upchurch	3rd Regiment, Georgia Reserves	Confederate	Georgia
View Record	M. Upchurch	3rd Battalion, Texas Cavalry State Troops (6 months, 1863-64)	Confederate	TX
View Record	Lawrence Upchurch	29th Regiment, Mississippi Infantry	Confederate	Mississippi
View Record	A.J. Upchurch	43rd Regiment, North Carolina Infantry	Confederate	North Carolina
View Record	J.R. Upchurch	Hilliard's Legion, Alabama Volunteers	Confederate	Alabama
View Record	Thomas Upchurch	22nd Battalion, Tennessee Infantry (Murray's)	Confederate	TN
View Record	Haywood R. Upchurch	2nd Regiment, US Volunteer Infantry	Union	Union Volunteers
View Record	G.H. Upchurch	1st Regiment, Arkansas Cavalry (Monroe's)	Confederate	Arkansas
View Record	Simon M. Upchurch	55th Regiment, North Carolina Infantry	Confederate	North Carolina
View Record	Calvin Upchurch	8th Regiment, Florida Infantry	Confederate	Florida
View Record	W. Upchurch	4th Regiment, Georgia Reserves	Confederate	Georgia
View Record	O. Upchurch	Terry's Regiment, Texas Cavalry	Confederate	Texas
View Record	Ansel M. Upchurch	58th Regiment, North Carolina Infantry	Confederate	North Carolina
View Record	B. Upchurch	8th Regiment, Mississippi Infantry	Confederate	Mississippi
View Record	John C. Upchurch	20th Regiment, Alabama Infantry	Confederate	Alabama
View Record	Ross Upchurch	22nd Battalion, Tennessee Infantry (Murray's)	Confederate	Tennessee
View Record	W. Upchurch	Unassigned US Volunteer Infantry	Union	Union Volunteers
View Record	Corlin Upchurch	42nd Regiment, Alabama Infantry	Confederate	Alabama
View Record	J.F. Upchurch	1st Regiment, North Carolina Junior Reserves	Confederate	North Carolina
View Record	James W. Upchurch	1st Regiment, North Carolina Infantry	Confederate	North Carolina
View Record	C.B. Upchurch	43rd Regiment, Alabama Infantry	Confederate	Alabama

Continued next page



Military Column:

Continued from page 22

View Record	W. Upchurch	3rd Regiment, Texas Cavalry State Troops (6 months, 1863-64)	Confederate	TX
View Record	C. H. Upchurch	25th Regiment, Tennessee Infantry	Confederate	Tennessee
View Record	Heywood R. Upchurch	4th Regiment, Tennessee Cavalry	Confederate	Tennessee
View Record	Alfred V. Upchurch	19th Regiment, Georgia Infantry	Confederate	Georgia
View Record	William Upchurch	1st Battalion, Georgia Reserve Cavalry	Confederate	Georgia
View Record	Camp Upchurch	4th Regiment, United States Colored Heavy Artillery	Union	
	U.S. Colored Troops			
View Record	Richard Upchurch	26th Regiment, North Carolina Infantry	Confederate	North Carolina
View Record	Joseph C. Upchurch	9th Regiment, Illinois Infantry	Union	Illinois
View Record	George Upchurch	3rd Regiment, Arkansas Cavalry	Union	Arkansas
View Record	C. Upchurch	8th Regiment, Georgia Infantry (State Guards)	Confederate	Georgia
View Record	L.H. Upchurch	44th Regiment, Georgia Infantry	Confederate	Georgia
View Record	Almarine G. Upchurch	Wood's Regiment, Confederate Cavalry (1st Mississippi Cavalry) (Wirt Adams' Regiment)	Confederate	Confederate Troops
View Record	Henderson Upchurch	30th Regiment, Kentucky Infantry	Union	Kentucky
View Record	Claiborn D. Upchurch	66th Regiment, Georgia Infantry	Confederate	Georgia
View Record	Isam Upchurch	16th Regiment, North Carolina Infantry	Confederate	North Carolina
View Record	Joseph C. Upchurch	128th Regiment, Illinois Infantry	Union	Illinois
View Record	Martin B. Upchurch	3rd Regiment, Kentucky Infantry	Union	Kentucky
View Record	C. Upchurch	Hilliard's Legion, Alabama Volunteers	Confederate	Alabama
View Record	James M. Upchurch	43rd Regiment, Tennessee Infantry (Gillespie's) (5th East Tennessee Volunteers)	Confederate	Tennessee
View Record	A.V. Upchurch	19th Regiment, Georgia Infantry	Confederate	Georgia
View Record	John C. Upchurch	Cobb's Legion, Georgia	Confederate	Georgia
View Record	Henry R. Upchurch	4th Regiment, Tennessee Cavalry	Confederate	Tennessee
View Record	Burt Upchurch	37th Regiment, Alabama Infantry	Confederate	Alabama
View Record	W.L. Upchurch	7th Regiment, Confederate Cavalry (Claiborne's Partisan Rangers)	Confederate	Confederate Troops
View Record	Oliver P. Upchurch	47th Regiment, North Carolina Infantry	Confederate	North Carolina
View Record	Name	Regiment Name	Side	Regiment State/Origin
View Record	A.B. Upchurch	1st Regiment, North Carolina Infantry	Confederate	North Carolina
View Record	Osburn Upchurch	60th Regiment, Alabama Infantry	Confederate	Alabama
View Record	K.B. Upchurch	5th Regiment, Alabama Cavalry	Confederate	Alabama
View Record	Thomas Upchurch	4th Regiment, Tennessee Cavalry (Murray's)	Confederate	Tennessee
View Record	Benjamin Upchurch	66th Regiment, North Carolina Infantry	Confederate	North Carolina
View Record	Burt Upchurch	2nd Regiment, Alabama Infantry	Confederate	Alabama
View Record	S. Upchurch	7th Regiment, Texas Cavalry (7th Mounted Volunteers)	Confederate	Texas
View Record	Moses Upchurch	30th Regiment, Kentucky Infantry	Union	Kentucky
View Record	Britton Upchurch	1st Regiment, Arkansas Cavalry (Crawford's)	Confederate	Arkansas
View Record	Jubal Upchurch	47th Regiment, North Carolina Infantry	Confederate	North Carolina
View Record	Wesley Upchurch	7th Regiment, North Carolina Infantry	Confederate	North Carolina
View Record	Shelby Upchurch	37th Regiment, Kentucky Infantry	Union	Kentucky
View Record	B.A. Upchurch	1st Regiment, North Carolina Infantry	Confederate	North Carolina
View Record	David Upchurch	48th Regiment, Illinois Infantry	Union	Illinois
View Record	J.W. Upchurch	2nd Regiment, Louisiana Infantry	Confederate	Louisiana

Continued next page



Military Column:

Continued from page 23

View Record	James K. Upchurch	Hilliard's Legion, Alabama Volunteers	Confederate	Alabama
View Record	A.A.B. Upchurch	13th Battalion, North Carolina Light Artillery	Confederate	NC
View Record	Jasper W. Upchurch	1st Regiment, North Carolina Cavalry	Confederate	North Carolina
View Record	Heywood R. Upchurch	Unassigned US Volunteer Infantry	Union	Union Volunteers
View Record	Green Berry Upchurch	33rd Regiment, North Carolina Infantry	Confederate	North Carolina
View Record	George W. Upchurch	46th Regiment, Tennessee Infantry	Confederate	Tennessee
View Record	C.E. Upchurch	53rd Regiment, Georgia Infantry	Confederate	Georgia
View Record	John F. Upchurch	20th Regiment, Tennessee Cavalry (Russell's)	Confederate	Tennessee
View Record	Harbord M. Upchurch	17th Regiment, Alabama Infantry	Confederate	Alabama
View Record	Oliver H. P. Upchurch	10th Regiment, Texas Infantry (Nelson's)	Confederate	Texas
View Record	John W. Upchurch	35th Regiment, Tennessee Infantry (5th Infantry) (1st Mountain Rifle Regi-	Confederate	Tennessee
View Record	C. H. Upchurch	8th Regiment, Tennessee Cavalry (Smith's)	Confederate	Tennessee
View Record	M.D. Upchurch	15th Regiment, North Carolina Infantry	Confederate	North Carolina
View Record	William Upchurch	10th Regiment, Tennessee Infantry	Confederate	Tennessee
View Record	T. J. Upchurch	5th Regiment, Tennessee Infantry	Confederate	Tennessee
View Record	Ben Upchurch	6th Regiment, North Carolina Senior Reserves	Confederate	North Carolina

Search For Soldiers - The Civil War (U.S. National Park Ser- vice)

For Soldiers The Civil War was the first war in American history in which a substantial proportion of the adult male population participated. Almost every American would have known friends, family members, or neighbors who marched off to war, many never to return. The service records of these men, North and South, are contained in the Civil War Soldiers and Sailors System. Please note that the Civil War Soldiers and Sailors System contains just an index of the men who served in the Civil War with only rudimentary information from the service records (including name, rank and unit in which they served). The full service records are housed at the National Archives and Records Administration. [Click here](#) for information about obtaining copies of those records, using the film number y in the Civil War Soldiers and Sailors System record. Additionally, all records in this database have been transcribed from the Nation.

[Search for Upchurches](#)

Side
[Confederacy](#) (245)

[Union](#) (49)

State
[North Carolina](#) (77)

[Tennessee](#) (50)

[Alabama](#) (31)

[Georgia](#) (29)

[Illinois](#) (20)

[Texas](#) (20)

[Arkansas](#) (16)

[Kentucky](#) (16)

[Mississippi](#) (13)

[Other Volunteers](#) (4)

[Confederate States](#) (3)

[Florida](#) (3)

[Missouri](#) (3)

[United States Colored Troops](#) (3)

[Louisiana](#) (2)

[Indiana](#) (1)

[Pennsylvania](#) (1)

[South Carolina](#) (1)

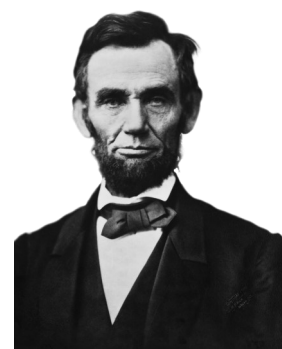
[Virginia](#) (1)

Battle Unit Function:

[Infantry](#) (204)

[Cavalry](#) (53)

[Artillery](#) (12)



THE UPCHURCH FAMILY IN ENGLAND UNDERSTANDINGS AND MISUNDERSTANDINGS *by Robert Phillip Upchurch, PhD*

This excerpt appears in *ENGLANDIA THE UPCHURCH FAMILY OF OLD ENGLAND* VOLUME 1. NUMBER 1 JAN - JUN 1996. This comprehensive work is available in its entirety online for historians and those researching the roots of all UPCHURCH kin.

An abbreviated presentation on what is understood about the Upchurch family in England may be helpful to those who are just beginning to consider their Upchurch heritage in England.

First it should be understood that the name Upchurch, which is the standard form used in America today (with one exception), had many spellings in the old days in England. Among them were Upcher, Upshire, Upshur, Upchurche, Upchare, Upshure, Upschire, Upchirbe, Upcyrcean, Upchere, Upchar, and Upcharde.

There is an extensive Upshur family in America and it is likely that the American Upchurch and Upshur families trace back to a common ancestor in England. In *ENGLANDIA* the abbreviation "U" will be used for members of the Upchurch family irrespective of the spelling found in the records.

The river, Medway, flows into the river, Thames, in the shire of Kent in southeastern England. On the Medway there is the village of UPCHURCH in which there is the ancient church of St. Mary's which is believed to date back to the 1100's. Many members of the Upchurch family learn of this village and presume that this was the origin of the family going back 500 or more years. There is no basis for this presumption. No evidence has yet been found to show that any Upchurch family member ever lived in or near this village. Such information may yet appear, but for the present such information as is available show that as late as 1500 the known Upchurch family members resided in East Anglia, which is north of the river Thames.

Another belief, which has now been corrected, is that when Michael Upchurch I left England for America about 1638, he left from an Upchurch family setting at Little Gidding in Huntingdonshire. While Michael did correspond with the Ferrar family at Little Gidding from his setting in America,

Bits and Pieces



we now know he was not from Little Gidding. It is our belief that his family lived at or near the village of Brington, which is just 5 or 6 miles south of Little Gidding. This story has been told more completely in the UB (UPCHURCH BULLETIN).

We have many references which place Upchurch family members in East Anglia in the 1550-1750 era. It is hoped that these various Upchurch groups can



Interior of Little Gidding Church 1851

be connected genealogically and the results reported in the successive issues of *ENGLANDIA*. In the past the most attention has been given to Upchurch relationships in the areas of Little Gidding and Brington which are in the easternmost reaches of East Anglia. In the future we will address more fully Upchurch relationships to areas such as Cambridge, Ely, and Colchester which are scattered throughout East Anglia.

While we are now reasonably comfortable that Michael U. I was the son of the Richard U. who was known to be in the Community of Brington, England, in the 1650 era, we have not settled upon the father of this Richard U. Professor Ransome's Report No. 2 offers several possibilities for the father of this Richard U.

Heritage Recipe Corner

Warshing Clothes Recipe



grandmother gave the new bride the following recipe:

(It says: this is an exact copy as written and found in an old scrapbook, spelling errors and all).

Instructions

Build fire in backyard to heat kettle of rain water. Set tubs so smoke wont blow in eyes if wind is pert.

Shave one hole cake of lie soap in boilin water.

Sort things, make 3 piles
1 pile white,
1 pile colored,
1 pile work britches and rags.

To make starch, stir flour in cool water to smooth, then thin down with boiling water.

Take white things, rub dirty spots on board, scrub hard and boil, then rub colored

don't boil just wrench and starch.

Take things out of kettle with broom stick handle, then wrench, and starch.

Hang old rags on fence.

Spread tea towels on grass.

Pore wrench water in flower bed.

Scrub porch with hot soapy water.

Turn tubs upside down.

Go put on clean dress, smooth hair with hair combs. Brew cup of tea, sit and rock a spell and count your blessings.



I could not find a specific writer to attribute this story to. It is posted in many places. -Editor

By
**Mae Davenport
Cox**



Mae D. Cox is a 10th generation Upchurch descendant — Michael Upchurch I — Richard Upchurch — John U. I — James U., III — Harmon Upchurch — Allen U. — Patrick Bogan Upchurch — Charles Wesley U. — May Upchurch — Mae Davenport Cox

Charles Wesley Upchurch Family. Ca. 1896. Mary May, grandmother to this author, appears to be four or maybe five years old (she was born 1892).



Mae Davenport Cox is a writer of many family history books and she has penned at least two articles just for this publication! See the following:



The Upchurches of Virginia, North Carolina, Arkansas, and Indian Territory: 1624-1925



Davenports and Upchurches: Pioneers in Indian Territory



Buckhead, O.T. The History of a Community and its People

Michael Upchurch by Mae Davenport Cox



*Michael Upchurch,
His Life. His
Times, His Legacy:
1624-1681*

Second Edition
January 2012,

136 Pages, Indexed
Illustrated \$32.

[Click here for more
information](#)

Of all Mae's books, I am told, her most popular is *Michael Upchurch (1624-1681)*. In it she provides an in-depth look at his life in America, and includes many documents and records!

For more information or ordering, just click any one of the books or visit www.coxok.com

There may be a possible delay in shipping since the onset of COVID-19.
—UAFA